

**BOX # 1****ACT I**

- PARTY GIRLS (Friends of Clara) and YOUNG PARTY GIRLS
- 8 YOUNG LADIES FRIENDS DRESSES
- CLARA PARTY DRESSES and NIGHTGOWNS
- PANTALOONS, HAIR BOWS, CAPES & HATS (Prologue)

**BOX # 2****ACT I**

- YOUNG LADIES EMPIRE LONG DRESSES W/ trains
- 2 EXTRA PARTY DRESSES
- CRINOLINES for extra party dresses a Clara's Blue costume

**BOX #3****ACT I**

- BOYS JACKETS
- BOY'S SHIRTS
- KNICKERS
- BOY'S CAPS & CAPES

**BOX # 4**

- DROSSELMAYER COSTUMES, CAPES, NUTCRACKER DOLL and RED BOX

**BOX # 5****ACT I/BATTLE SCENE**

- SOLDIER DOLL Party scene & Battle
- SOLDIERS

**BOX # 6****ACT I/BATTLE SCENE**

**Does Not Include 12 Mice Masks in This Box**

- LARGE MICE
- TINY MICE
- RAT KING
- MOUSE PRINCE
- BOOTS

**BOX # 7****ACT I**

- NUTCRACKER SNOWFLAKES (Main Company)
- EXTRA SNOWFLAKE COSTUMES (Corps De Ballet)
- TIARAS

**BOX # 8 & 9****ACT II**

- ANGELS Costumes

**BOX # 10****ACT II**

- WALTZ of the FLOWERS Soloists Main Company and Corp de Ballet
- HEAD PIECES

**BOX # 11****ACT II**

- BAKERS
- MARZIPAN DRESS & TUTU
- CHINESE Duet Soloists
- LITTLE CHINESE (young dancers) (background)

**BOX # 12****ACT II**

- ARABIAN Couple/ or Soloists and Corps
- RUSSIAN 2 Male soloists and 4 Female (Background)
- SPANISH MALE and FEMALE Soloists
- SHEPHERDESS Soloist either Tutu or Ballet dress

**BOX # 13****ACT I & II**

- MEN'S BALLET JACKETS
- MAID DRESS OPTIONS
- GRANDMOTHER/ ACT I COSTUME OPTIONS
- PAGES
- WOLF COSTUMES
- JESTER or HARLEQUINARD COSTUME Act. I
- BALLERINA DOLL Act I
- CHRISTMAS STAR costumes

**BOX # 14****ACT II**

- 12 MUSHROOMS (option to Little Chinese Costumes)

**BOX A****PROLOGUE**

- YOUNG LADIES, LONG CAPES
- ADULT SHORT DOUBLE CAPES
- MEN'S LONG DOUBLE CAPES

**BOX B****PROLOGUE**

- BLACK MEN'S TOP HATS w/ Black grosgrain ribbon

## **BOX C**

- 10 SHEEP

## **BOX D**

- 12 MUSHROOM HATS

## **BOX E**

- 12 BAKER PROPS/ GOODIES, cakes, pies, cookies, brownies

## **BOX F**

- 17 GOLD MESH TREE TOP STARS W/ HANDLES for Angels

## **BOX H**

- ORIGINAL NUTCRACKER HEAD

## **BOX J**

- SMALLER NUTCRACKER HEAD
- MOUSE PRINCE MASK
- WOLF MASK AND GLOVES
- RAT KING HEAD MASK

## **BOX K**

- 12 BIG MICE MESH MASK HEADS

## **BOX L**

- 5 SNOW BAGS

## **BOX M**

- LIGHTING GELS

## **BOX N**

- RED VELOR WINDOW CURTAINS for ACT I PARLOR SCENE

# BOX 1 NUTCRACKER DETAILS

## BOX # 1      ACT I & PROLOGUE

### PARTY GIRLS (Friends of Clara) and Young Party Girls

- 3      **Blue Clara party dresses (Variety of Sizes)**
- 4      **Pink Clara Nightgowns (Variety of Sizes)**
- 7      **Party Girl Dresses (Friends of Clara)**
  - 1      **Gray Taffeta dress**, trim w/ white lace Pink tiny rose buds, with a pink satin 2 ½ " ribbon waist band, bow in back
  - 1      **Purple Taffeta dress**, trim cream lace, pink and gold, light pink rose buds and cream satin 2 ½ " ribbon waist band, bow in back.
  - 1      **Dusty Rose crepe de sheen dress**, trimmed w/ cream lace, maroon lace and gold trimming, Maroon satin 2 ½ " waist band, bow in back
  - 1      **Dark Pink taffeta dress**, trimmed w/ cream lack, blue ribbon cream appliqued front panel, decorated w/ light peach rose buds, Blue Satin 2 ½ " Ribbon waist band
  - 1      **Antique gold crepe de sheen dress**, lace " V" appliqued front panel, w/ wine color rose buds, a broach, trimmed w. cream lace, wine trimming, wine satin waist 2 ½ " ribbon band, bow in back
  - 1      **Peach dress** trimmed w. cream lace, wine ribbon trim, wine satin 2 ½ " ribbon waist band, bow in back
  - 1      **Olive green crepe de sheen dress**, trimmed w/ yellow and wine and cream lace, Green and Yellow strip 2 ½ " ribbon waist band, bow in back
- 5      **Young party girl dresses Plus 1 extra skirt**  
dark blue bodices, and cream crepe de sheen knee length skirts, each differently trimmed with gold ribbon, light blue, turquoise, wine and gold all with differently designed waist band, w/ bow in back
- 10     **White lace bottoms pantaloons**
- 2      **White lace bottoms pantaloons for the Clara w/ light blue ribbon trim**
- 7      **Young Girls Capes (Prologue)**
  - 2 Blue soft velveteen w/ White fake fur trim
  - 2 Dark Pink soft velveteen w/ White fake fur trim
  - 1 Green Satin with White fake fur trim
  - 1 Dark Purple soft velveteen w/ White fake fur trim
  - 1 Black soft velveteen w/ White fake fur trim
- 7      **Young party girls hats (Prologue)**



# BOX 1 NUTCRACKER DETAILS

Clara 's Act I Blue dress and Pink Chiffon Nightgown



## BOX 1 NUTCRACKER DETAILS



Show 5 of 7 capes



Shown 2 hats of 7 worn in prologue



Shown 4 of 5 Young party girl dresses (Blue and Crème)



Shown 6 of 7 girls party dresses ( friends of Clara)

## BOX 1 NUTCRACKER DETAILS



Olive

Peach

Antique Gold

Clara

Gray

Purple

Dusty Rose



## NUTCRACKER BOX 2

### **BOX # 2      ACT I**

**2 Young Ladies empire style long cream satin dresses...trimmed w/gold, red stones and pearls... w/ a long satin train    2 pairs white long gloves** 2 Young Ladies.

**2 Extra Party Parent Dresses:    and 4 nylon/tulle crinolines.**

1 long pink satin trimmed with white lace.

1 long copper color dress trimmed with cream lace



1 long copper color dress trimmed with cream lace



1 long pink silk chiffon trimmed with white lace gold trim

## NUTCRACKER BOX 2



Close up of copper dress



Close up of pink silk chiffon dress



2 white full nylon/Tulle crinoline size 4



1 white nylon slip floor length size 14



1 White full short tulle petticoat for Clara's party dress

2 White nylon /tulle crinolines(petticoats) floor length size 4

1 White nylon slip floor length petticoat size 14

1 White full short tulle petticoat used for Clara party dress

**BOX # 3      ACT I & PROLOGUE      40 ITEMS**

**9 BOYS JACKETS**

Cranberry velveteen  
Green velveteen  
Brown velveteen  
Dark Blue velveteen  
Light lavender corduroy  
Purple corduroy  
Brown corduroy  
Red corduroy  
Aqua corduroy

**7 BOYS SHIRTS w/ ascots, half vest**

Blue Brocade  
Light aqua brocade  
Med dark pink corduroy  
Cream gold brocade  
Tan and gold brocade  
Light pale cream brocade  
Maroon brocade

**12 BOYS NUTCRACKER KNICKERS**

6 Blue cotton  
6 Corduroy  
1 Tan, 4 Shades of Gray, 1 med. Brown

**7** Boy Short Capes for Prologue Dark Blue, Gray, Tan, & Browns

**5** Boy Blue caps



## NUTCRACKER BOX 3



Boys Costumes Shown 5 of 9 Jackets .. 5 of 7 Shirts w/ ascots, Attached Half Vests, 5 of 12 Knickers



### NUTCRACKER BOX 3



Boys Capes and Caps IN Prologue



## NUTCRACKER BOX 4

### **BOX # 4    ACT I & II    12 ITEMS**

#### **DROSSELMEYERS COSTUMES**

- 1 Black Gabardine Tuxedo coat w/ Tails
- 1 Wine color Gabardine Gentleman's coat wine velvet collar & cuff
- 1 Black Gabardine Long Double Cape w/ Black satin trim
- 1 Black Velvet tuxedo Coat no collar gold & black brocade cuffs, trimmed w/ gold buttons and gold trimming
- 1 Large and Long floor length Green Satin Double Cape w/ wide gold braid trim on bottom of cape (w/ 2 sticks in the arm of the cape to hold cape open
- 1 Wizard Double Cape Black Velvet covered w/ sparkle snowflakes pattern ..Dark Blue Satin lining... Top Cape Black Satin w/ gold and Black rope to tie
- 1 Wizard Hat same material as cape
- 2 Vests 1 Green taffeta ling covered with brocade swirl design
  - 1 Green crepe de sheen layer w/ netting multicolor green and gold design.. w/ gold and sequin and pearls
- 1 Chiffon piece of material used as a blind fold. 1
- 1 Crystal Plastic Wand.
- 1 A Nutcracker Doll that the head can be removed by Fritz and Clara in Act I Inside a Red velvet cover box with gold bow

## NUTCRACKER BOX 4



Black Velvet tuxedo Coat no collar  
gold & Black brocade cuffs, trimmed  
w/gold buttons and gold trimming



Black Gabardine Long Double Cape w/ Black satin trim  
Red velvet cover box with gold bow



Wine Color Gabardine  
Gentleman's coat wine  
velvet collar & Cuff

## NUTCRACKER BOX 4



Large and Long floor length Green Satin  
Double Cape w/ wide gold braid trim on bottom of cape  
(w/ 2 sticks in the arm of the cape to hold cape open)

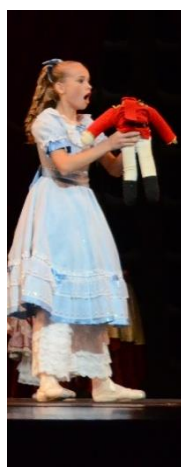




## NUTCRACKER BOX 4



Wizard Double Cape Black Velvet covered w/ sparkle snowflakes pattern ..Dark Blue Satin lining...  
Top Cape Black Satin w/ gold and Black rope to tie ...Wizard Hat same material as cape and Wand



A Nutcracker Doll that the head can be removed by Fritz and Clara in Act I

## NUCRACKER BOX 5

### **BOX # 5      ACT I   & BATTLE SCENE      182 ITEMS**

#### **NUTCRACKER SOLDIER DOLL Party scene & Battle**

**1 RED LONG SLEEVE HIGH COLLAR WOOL GABERDINE JACKET WITH SHORT TAILS TRIMMED W/ GOLD BUTTONS & GOLD TRIM (FRONT AND BACK) (USE SOLDIER HAT W/ GOLD EMBLEM ON FRONT) WEARS OWN WHITE TIGHTS & BLACK BOOTS**

#### **NUTCRACKER SOLDIERS**

**12 RED AND WHITE SOLDIER JACKETS w/ tails**

**3 WHITE SMALL TANK TOPS COTTON/LYCRA FOOTLESS UNITARD**

**5 WHITE MED. TANK TOPS COTTON/LYCRA FOOTLESS UNITARD**

**1 WHITE MED. TANK TOPS NYLON/LYCRA FOOTLESS UNITARD**

**2 WHITE LARGE TANK TOPS COTTON/LYCRA FOOTLESS UNITARD**

**2 WHITE LARGE TANK TOPS NYLON/LYCRA FOOTLESS UNITARD**

**1 WHITE X-LARGE TANK TOPS COTTON/LYCRA FOOTLESS UNITARD**

**15 PRS. OF LEFT HAND WHITE GLOVES**

**13 PRS. OF RIGHT HAND WHITE GLOVES**

**29 SMALL LONG BLACK SOCKS**

**39 LONG BLACK SOCKS**

**11 BLACK SOLDIER HATS W/ red or yellow feather**

**1 General Hat... Flat Black Felt.. decorated with gold trim..**

**1 EXTRA BLUE SOLDIER JACKET gold trim and gold buttons ..white Satin unitard trousers decorate along sides of pants in gold trim**

#### **NUTCRACKER SOLDIERS PARTS**

**13 RED BODICES W/ SLEEVES attached CUFFS w/ gold trim**

**13 RED FRONT PANEL W/ FOLD TRIM and BUTTONS**

**13 RED GARTTERS for the top of the black socks**

**2 EXTRA EPOULETTS,**

**2 EXTRA FRONT PANELS**

**3 EXTRA PRS. OF CUFFS,**

**Bag of red felt checks**



## NUCRACKER BOX 5



FRONT



NUTCRACKER SOLDIER DOLL (in red)



BACK





## NUCRACKER BOX 5



NUTCRACKER SOLDIER DOLL (in blue)

## **BOX # 6      ACT I    BATTLE SCENE      155 ITEMS**

**Does Not Include 12 Mice Masks In This Box**      12 MOUSE MASKS SEPARATE PLASTIC BOX

### **LARGE MICE**

- 12 Gray Mouse suits w/ belly and tails
- 23 Gray Turtle neck long leotards various sizes
- 12 Gray tights various sizes
  - Additional 6 new prs. of tights 1 size 2, 2 size 3, 2 size 4, 1 size 5
- 20 pairs of gray gloves with nails
- 13 pairs of gray gloves without nails
- 2 packages of extra nails

### **TINY MICE**

- 15 Gray leotards with tail
- 15 Gray mouse hooded hats with ears gray/black fur backing and pink satin front
- 20 Pairs of Gray small tights
- 3 pairs of mouse mouth nose pieces

### **RAT KING #1**

Purple Satin, crushed velvet short coat with coat tails.  
Black strip on purple background material Lapels, trim with iridescent purple sequins. Black long stretch stirrup pants ...  
Black 7 Inch wide elastic sequin waist band... w/ blue, silver, gold sequin applique on front.

### **RAT KING #2 Alternate Costume**

White Sleeveless shirt ...attached to shirt ..long sleeves made from crushed dark purple velvet mixed with light purple file satin, trimmed with black iridescent sequins. ... on front of shirt white and black lace ascot... white ruffle cuffs.

### **RAT KING #3 Alternate costume**

Long brownish velvet tunic long sleeves antique gold frog appliques and gold and purple trim.

**MOUSE PRINCE** purple, gold, lavender brocade material Top long fitted tunic. No sleeves. (a gray long sleeve turtle neck leotard to be worn under the tunic) Attached is a purple velveteen cape with a gold lamé lining

**4 PRs. BLACK BOOTS** 2 prs. Canvas Ballet Boot size 16 M,  
1 pr Canvas Ballet Boot size 15 M ...1 pr. Satin Ballet Boot size 9M

### **FOR ANOTHER VERSION FOR THE 12 MICE**

**THE 12 GREY AND BLACK FUR CAPES can be used over a grey turtle neck Unitards**





12 MOUSE HEADS ARE IN A SEPARATED BOX



TINY MICE AND MOUSE PRINCE



MOUSE PRINCE



RAT KING #1

MOUSE KING #2



ALTERNATE MOUSE KING #3







**12 GREY AND BLACK FUR MOUSE CAPES WITH WINE COLOR METALLIC LINING, with elastic to fit around the wrists**  
**Can be worn over grey turtle neck long sleeve unitards...**

## NUTCRACKER BOX 7

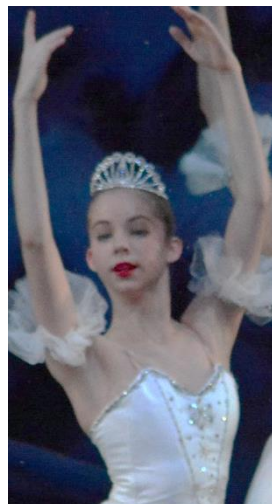
### **BOX # 7   86 ITEMS**

#### **NUTCRACKER SNOWFLAKES** (for main company)

- 16 Snow Bodices
- 14 Snow skirts
- 20 Pairs Snow Sleeves
- 12 Large Rhinestone Crowns
- 6 Medium Rhinestone Crowns
- 6 Small Rhinestone Crowns

#### **EXTRA SNOWFLAKE COSTUMES** (Corps De Ballet)

- 6 white knee length netted tulle skirts decorated with single rhinestone on top layer
- 6 decorated boned bodices with silver trimming and rhinestones.



**12 Large Rhinestone Crowns**



## NUTCRACKER BOX 7



**BOX # 8 & 9** **66 ITEMS**

**ANGELS**

- 7 Angel Costumes white parachutes material with gold stars and gold ribbon trim with a gold and white sequin applique on the neckline
- 7 White Plastic Hoops that need to be inserted
- 7 Angels Hats w/ Crystal star

**BOX # 9**

**ANGELS**

- 8 Angel Costumes white parachutes material with gold stars and gold ribbon trim with a gold and white sequin applique on the neckline
- 8 White Plastic Hoops that need to be inserted
- 6 Angels Hats w/ Crystal star
- 4 Angels Hats w/ out Crystal Star





## **NUTCRACKER BOX 8**



**15 ANGELS COSTUMES**

**17 GOLD MESH TREE TOP STARS W/ HANDLES**

**WITH Lights inside the stars**

**2 GOLD MESH TREE TOP STARS W/O HANDLES**



## NUTCRACKER BOX 10

### **BOX # 10**

#### **WALTZ of the FLOWERS** **70 ITEMS**

- 1 Dew Drop soloist costumes Pink lycra spaghetti strap leotard short silk chiffon skirt decorated in decorated in soft pink sequins and pick trim and rhinestones.
- 1 Dew Drop soloist costume Pink lycra spaghetti strap leotard short pleated chiffon skirt decorated in soft pink sequins and pick trim and rhinestones.

**1 Soloist Pink file Bodice decorated with flowers (boning)**

**Soloist TUTU in separate tutu bag**

- 14 Waltz pink file Bodices decorated (with boning)
- 15 Waltz skirts main company
- 4 Extra Pink file Bodices decorated (with boning)
- 4 Extra pink file Bodices not decorated (w/ boning)

#### **Different costumes for corps de ballet**

- 5 Extra corps de ballet bodices decorated
- 3 Extra corps de ballet bodices unfinished
- 21 Handmade Flowered head pieces (satin flowers w/ pink and white pearls)



DEW DROP SOLOIST TUTU





## NUTCRACKER BOX 10



## NUTCRACKER BOX 10



ALTERNATIVE TO DEW DROP

Dew Drop soloist costume Pink Lycra spaghetti strap leotard **short pleated chiffon skirt** decorated in soft pink sequins and pick trim and rhinestones.



Dew Drop soloist costumes Pink Lycra spaghetti strap leotard **short silk chiffon skirt** decorated in soft pink sequins and pick trim and rhinestones.





## NUTCRACKER BOX 10

CLOSE UP PHOTOS OF WALTZ OF THE FLOWERS DEW DROP TUTU



## NUTCRACKER BOX 11

### **BOX # 11 ACT II 106 ITEMS**

## **BAKERS, MARZIPAN DRESS & TUTU, CHINESE**

**Marzipan Female Soloist:** Marzipan: Aqua Satin Bodice, Lots sparkling trim

Skirt 3 layers of Tulle netting... a light Aqua organza top layer trimmed with lots of sparkling trimming

1 Soloist Crown pink, Aqua, and Gold Jewels..

**Alternative Female Soloist: in TUTU see photos below**

**Bakers:**

- 16 White Baker Jackets w/ gold flat buttons
- 9 Long White loose pants (Nylon/Lycra) all sizes
- 7 Long White loose Pants (cotton) all sizes
- 14 Lilac w/ tiny dots square Neck Scarfs
- 12 Aqua triangle neck scarfs
- 13 White Baker Hats
- 2 Gingerbread Costumes Brown velor shorts w/ straps with white rick rack trim (need brown lycra long sleeve turtle neck unitard)

**Handmade Cakes, Pies, Cookies, Brownies in Separate Plastic BOX**

### **CHINESE**

#### **Female Soloists:**

- 1 long sleeve tunic .. Med color Peach, pattern material... trimmed in red Satin and gold dragon and many other sequin appliques...
- 1 Red Silk pants to ankle trimmed in gold
- 1 pr. decorated chopsticks for head piece.

#### **Male Soloist:**

- 1 Jacket long sleeves Med color Peach pattern material trimmed in red Satin and gold dragon appliques.
- 1 Red Silk pants to ankle trimmed in gold
- 1 Red & Black Satin Chinese cap, attached a black long braid

#### **Little Chinese (young dancers):**

- 8 Peach Satin Jackets w/ Red satin trim around neckline Trimmed w/ several dragon multicolor appliques and red frog appliques down the front center of jacket...
- 8 Peach Satin pants to ankle w/ red satin ribbon trim at bottom of pants.
- 8 Yellow Chinese caps trimmed in red Satin, and Long Black braid attached to back of cap.

## NUTCRACKER BOX 11

### BAKERS, MARZIPAN DRESS & TUTU, GINGERBREAD



Marzipan: Aqua Satin Bodice, Lots sparkling trim  
Skirt 3 layers of Tulle netting... a light Aqua organza top  
layer trimmed with lots of sparkling trimming  
1 Soloist Crown pink, Aqua, and Gold Jewels..



Alternate TUTU for MARZIPAN SOLOIST



## NUTCRACKER BOX 11

CLOSE UP PHOTOS OF MARZIPAN SOLOIST TUTU



BAKERS



## NUTCRACKER BOX 11



2 GINGER BREAD costumes Brown velor shorts w/ straps with white rick rack trim (need brown lycra long sleeve turtle neck unitard)



PASTRIES FOR THE BAKERS



PASTRIES FOR THE BAKERS





## NUTCRACKER BOX 11

### CHINESE

#### MALE AND FEMALE CHINESE SOLOISTS





## NUTCRACKER BOX 11



### 8 Little Chinese (young dancers):

- 8 Peach Satin Jackets w/ Red satin trim around neckline  
Trimmed w/ several dragon multicolor appliques and  
red frog appliques down the front center of jacket...
- 8 Peach Satin pants to ankle w/ red satin ribbon trim at  
bottom of pants.
- 8 Yellow Chinese caps trimmed in red Satin, and Long Black braid  
attached to back of cap.

**BOX # 12 ACT II 65 ITEMS**

**ARABIAN ACT II**

- 1 Skirts red, green, and gold with gold fringe and coins
- Female Soloists Arabian Green Chiffon Pants w/ gold trim
- 2 Male Arabian Green Pants (Different Color greens)
  - 1 Light Green Silk w/ gold sequin trim
  - 1 Dark Green Chiffon w/ Gold trim
- 1 Male Soloist dark green Vest .. soft polyester like fabric decorated w/ sparkling gold swirls trimmed with gold braiding.
  - 1 pr. of dark green sleeves, w/ gold trim for Male soloist (Optional)

**Ladies Arabian Pants and Bodices**

- 5 Antique gold chiffon brocade look soft and billowy Arabian Pants
- 2 plain gold soft and billowy Arabian pants.
- 1 Soloist Dark green velvet Arabian bodice fully decorated w/ gold braided trim, crystal beads, green and diamond like stones
- 5 decorated Arabian bodices w/ gold trim and colored stones, coins
  - 1 unfinished green velvet top bodice no trim
  - 1 Long 3" wide and very long sash light gold brocade w/ gold fringe and gold sequins.
- 5 Ladies dark green velvet decorated Belts w/ jewels, gold braid trim
- 5 head pieces: wired round crowns cover in gold material coming to a pointe lays on the forehead....trimmed in a gold sequin and colored jewels only 2 of the crowns have a long chiffon veil attached to the crowns and a finger loop that attaches to the finger.
- 1 Long and very wide (square) chiffon scarf w/ gold tassels on each end (Used in choreography)
  - A bag of extra stones and coins

## NUTCRACKER BOX 12

### **RUSSIAN COSTUMES ACT II**

**Female: 2 Yellow and Orange Russian Dresses...** Long chiffon Skirts Calf length (one shorter than the other) w/ braid multi color trim... Bodices Yellow crepe de sheen decorated w/ multicolor braid trim... Yellow silk chiffon long sleeves ..red and orange trim.

**2 extra white cotton long sleeves peasant blouses w/ multicolor trim**

**2 Yellow Russian style buckram hats** trim with gold sequins, red and green stones, red trim. Red, orange and yellow thin ribbons hanging from the 2 edges.

**Female: 2 Russian Dresses Gold Brocade Bodices** trimmed w/ red Satin and White Lace / gold trim... Red Satin Calf length Skirts w/ gold trim

**2 Red Russian style buckram hats** trimmed in red satin gold braided trim, and decorated in gold/white brocade.. trimmed w/ Iridescent gold rhinestones, thin ribbons in gold, white, red hanging from the 2 edges

**Male: 2 white blouse/Shirts.. big and billowy Sleeves** decorated red/gold blue trim

**2 Satin Red Russia Billowy Pants** w/ decorated sashes

**Male: 3 prs. Red Canvas Ballet boots, 1 size 15M, 1 size 13 M, and 12**

### **SPANISH COSTUMES ACT II**

**Female Soloist:**

**2 Spanish skirt** made on Red taffeta and many rows of Black Lace w/ a 4 inch Black velvet waist band. 1 very heavy skirt and 1 light weight skirt.

**4 Black  $\frac{3}{4}$  sleeves leotard pinched front and low back** each decorated differently.

**1 Black velvet Boned Bodice** trimmed with Black Drop beads, red satin ribbon, red stones, and black lace

**1 RED rose decorated with red stones.** Attached w/a small gold fan trimmed with black lace and rhinestones.

**Male Soloist:**

**4 Black Velvet long sleeve Jackets** decorated w/ gold appliques

**2 Black Velvet knickers w/ gold trimming on side of pants**

**1 White blouse w/ Ruffle front**



## NUTCRACKER BOX 12

### **SHEPHERDESS COSTUME ACT II**

#### **Female Soloist:**

**Bodice:** light blue satin decorated w/ some handmade multicolor flowers w/ bead inserts Front "V" white lace and blue ribbon

**Skirt:** 2 skirt overlay...white and blue decorated w/ Handmade small Blue/Green Beads

**1 Buckram Hat** aqua silk like material, decorated w/ chartreuse lime satin ribbon and w/ small tiny handmade flowers in rose, aqua, peach, lavender, pink and yellow (pearls and rhinestone) on the front and back of the hat. A hairpiece of brown curls attached to the back of the hat. Aqua Satin 2 ½ ribbon bow to tie.

### **ARABIAN COSTUMES**

1 Skirts red, green, and gold  
gold fringe and coins



Soloist w/ chiffon scarf



5 female costumes w/ 2 long chiffon veils  
w/ 2 long chiffon veils attached to the crowns



## NUTCRACKER BOX 12



MALE & FEMALE ARABIAN SOLOIST



4 GIRLS WITH SILK CHIFFON SCARF



## RUSSIAN COSTUMES



**Girls: 2 Yellow and Orange Russian Dresses...**Long chiffon Skirts Calf length (one shorter than the other) w/ braid multi color trim...Bodices Yellow crepe de sheen decorated w/ multicolor braid trim... Yellow silk chiffon long sleeves ..red and orange trim.

**2 YELLOW Russian style buckram hats** trim with gold sequins, red and green stones, red trim. Red, orange and yellow thin ribbons hanging from the 2 edges.



## NUTCRACKER BOX 12



**Female: 2 Russian Dresses Gold Brocade Bodices** trimmed w/ red Satin and White Lace / gold trim... Red Satin Calf length Skirts w/ gold trim

**2 Red Russian style buckram hats** trimmed in red satin gold braided trim, and decorated in gold/white brocade.. trimmed w/ Iridescent gold rhinestones, thin ribbons in gold, white, red hanging from the 2 edges



**2 Female Dresses** (same as above) only with white cotton long sleeves peasant blouse insert ( instead of chiffon sleeves)

**You have the choice of either style.**

## NUTCRACKER BOX 12



**Male: 2 white blouse/Shirts.. big and billowy Sleeves decorated red/gold blue trim**  
**2 Satin Red Russia Billowy Pants w/ decorated sashes**  
(They are wearing their own black boots)

**Male: 3 prs. Red Canvas Ballet boots, 1 size 15M, 1 size 13 M, and 12**

## SPANISH COSTUMES



This is the heavier weighted skirt



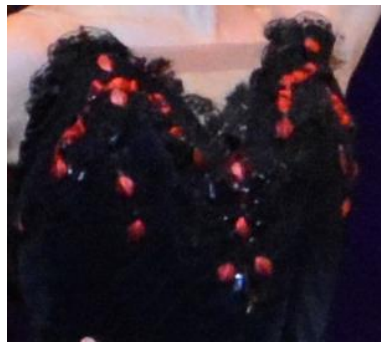
This is the the light weighted skirt

## NUTCRACKER BOX 12



### Male Soloist:

- 4 Black Velvet long sleeve Jackets** decorated w/ gold appliques
- 2 Black Velvet knickers w/ gold trimming on side of pants**
- 1 White blouse w/ Ruffle front**



- 1 Black velvet Boned Bodice** trimmed with Black Drop beads, red satin Ribbon, red stones, and black lace

**This Is the Heavier Weighted Skirt**



## NUTCRACKER BOX 12

### **SHEPHERDESS COSTUME ACT II**



#### **Female Soloist:**

**Bodice:** light blue satin decorated w/ some handmade multicolor flowers w/ bead inserts  
Front "V" white lace and blue ribbon

**Skirt:** 2 skirt overlay...white and blue decorated w/ Handmade small Blue/Green Beads

**1 Buckram Hat** aqua silk like material, decorated w/ chartreuse lime satin ribbon and w/ small tiny handmade flowers in rose, aqua, peach, lavender, pink and yellow (pearls and rhinestone) on the front and back of the hat. A hairpiece of brown curls attached to the back of the hat. Aqua Satin 2 ½ ribbon bow to tie.

## NUTCRACKER BOX 13

### **BOX # 13 ACT I & II**

### **33 ITEMS**

#### **6 Men's Ballet Jackets**

- 1 **Jester, Harlequinade,**  
**Tuxedo style long sleeve jacket...**White brocade swirl material..4" plum neck ruffle .. 1" plum ruffle cuffs with gold trim. 3 Large plum buttons
- 1 **Blue velvet long sleeve short jacket** a V front white satin pleated insert with silver trimming
- 1 **Cavalier White Brocade military style long sleeves Jacket...**  
silver buttons and trim
- 1 **Light Blue Vest ... with white chiffon attached sleeves**  
a "V" front white satin pleated insert.... all with silver trim
- 1 **Pale silver/blue brocade tunic/vest with**  
**white chiffon attached sleeves** with blue and silver trimming and silver applique around collar
- 1 **Dark velour tunic with white chiffon attached sleeves...** blue and gold trim vertical band down front of tunic... gold trim around collar, gold trim with gold and blue beads... two black beaded appliques on each side of front of jacket trim with gold and blue stones.

#### **Maid Dress Options**

- 1 **Cream color long sleeves high collar w/ cream lace front Blouse**  
w/ a row of pearl buttons, cream lace cuffs...
- 1 **Small white blouse**
- 1 **White Sleeveless Bib (front and back) w/ high collar....**  
2 separate pull on sleeves
- 1 **Long white cotton wrap around skirt w/ apron top w/ straps** to put over a long black floor length skirt
- 3 **Maid Caps** cotton and net

## NUTCRACKER BOX 13

### **3 Grandmother Act I costume options**

1. For a smaller Grandmother: wine color crush velvet long dress long sleeves with a broach pin... needs to be dresses up a bit.
- 1 Purple satin jacket long sleeves overlaid with black lace trim with Black sequins.. needs to have a purple skirt to go with it
- 1 For bigger Grandmother: Long black soft gaberdine skirt trim w/ Black satin ribbon.. Jacket same material as skirt .. white lace collar & white lace front.. with 8 rows of 3 " black braided rows with rhinestone buttons on both sides of the braid... gray satin sleeves overlay with decorated with white lace

### **4 Pages Act II**

- 4 green, salmon, black print Tunic... trim in gold ribbon and gold buttons with a small bright yellow/gold satin attached to the back of the Tunic. Worn over Brown Lycra long sleeve turtle neck footless unitard.
- 4 black colonial style hat with Yellow plume feathers

### **2 Wolf costumes Act II**

- 1 Black corduroy long Sleeve Jacket with white lace ascot white cuffs
- 1 Black corduroy long sleeve jacket with white cotton ruffle cuffs
- 2 Black trousers 1 satin and 1 velvet
- 1 Wolf Mask and gloves in separate plastic box

### **Jester costume Act I**

Based on a purple long sleeve purple footed unitard with gloves attached sleeves decorated like a jester cape .. purple, pink, white pointed triangles edges...w/ small color fur balls on the ends of the pointe. Then a skirt like w/ purple, with pointed triangles in sequins and velvet satin. Hot pink velour pail looking like hat w/ gold trim triangles attached Best to see photo...

### **Ballerina Doll Tutu Act I**

### **2 Christmas Star costumes** (can be used with Angels)

- 1 cream silk chiffon dress w/ spaghetti straps.... Rows of iridescent rhinestones streaming down front of dress ... addition extra long chiffon skirt to make longer for taller girl.
- 1 cream color silk chiffon w/ gold trim scarf like skirt trimmed with gold and silver rhinestones all over skirt **NO PHOTO**



## NUTCRACKER BOX 13



**Dark Blue Velvet Long Sleeve Short Jacket a "V" Front White Satin Pleated insert w/ silver trimming.**



**Light Blue Velvet Vest...w/ white Chiffon attached sleeves a "V" front White Satin Pleated insert.. w/ silver trimming.**



**Pale silver/blue brocade tunic/vest with white chiffon attached sleeves with blue and silver trimming & silver applique around collar**



**Cavalier White Brocade military style long sleeves Jacket... silver buttons and trim.**

## NUTCRACKER BOX 13



Jester, Harlequinade, Tuxedo style long sleeve jacket....White brocade swirl material... 4" plum neck ruffle... 1" plum ruffle cuffs with gold trim. 2 Large Plum Buttons.



Dark Blue velour tunic with white chiffon attached sleeves... blue and gold trim vertical band down front of tunic... trim with gold and blue beads... two black beaded appliques on each side of front of jacket trim with gold and blue stones.





## NUTCRACKER BOX 13

### MAID OPTION DRESSES



### 3 Grandmother Act I costume options



Purple Satin Jacket Long Sleeves overlaid with black lace trim with Black Sequins... needs to have a purple skirt to go with it.



Wine Color Crush Velvet Long Dress.. Long sleeves with a broach in the center of a lace collar neck line



## NUTCRACKER BOX 13



For bigger Grandmother: Long black soft gaberdine skirt trim w/ Black satin ribbon.. Jacket same material as skirt .. white lace collar & white lace front.. w/ 8 rows of 3 " black braided rows with rhinestone buttons on both sides of the braid... gray satin sleeves overlay with decorated with white lace

## PAGES



4 Green, Salmon, Black print Tunic... trim in gold ribbon and gold buttons with a small bright yellow/gold satin attached to the back of the Tunic. Worn over White or Brown Lycra long sleeve turtle neck footless unitard. or over a white long billowy sleeve shirt  
4 Black Colonial Style Hat with Yellow plume feathers.



## NUTCRACKER BOX 13

### WOLF COSTUME



- 1 Black corduroy long Sleeve Jacket with white lace ascot white cuffs
- 1 Black velvet Knickers
- 1 Wolf Mask and gloves in separate plastic box

### JESTER COSTUME ACT I



Based on a purple long sleeve purple footed unitard with gloves attached sleeves decorated like a jester cape .. purple, pink, white pointed triangles edges... w/ small color fur balls on the ends of the pointe. Then a skirt like w/ purple, with pointed triangles in sequins and velvet satin. Hot pink velour pail looking like hat w/ gold trim triangles attached.



## NUTCRACKER BOX 13

### Ballerina Doll in ACT I



**Christmas Star** Can be used with Angels or Snow

Cream Silk Chiffon Dress w/ spaghetti straps.... Rows of Iridescent Rhinestones streaming down front of dress  
Scarf Chiffon arm bands.



## NUTCRACKER BOX 14

### BOX # 14

MUSHROOMS Act II **an option to Little Chinese Costumes**

12 Med Tan soft suede material.. High neck ...”A line” look  
long sleeves .... to floor with hoops at bottom

12 Mushroom Hats are in 2 Boxes D

### 12 MUSHROOM COSTUMES



## NUTCRACKER BOX A

### BOX A

### 20 ITEMS

#### CAPES PROLOGUE

##### 2 YOUNG LADIES LONG CAPES

1 Dark Rose crushed Velvet Cape with Hood

1 Dark Blue crushed Velvet Cape with Hood

##### 12 ADULT LADIES AND PARTY GIRLS Double Capes (Prologue)

1 Dark Gray crushed velvet with Maroon ribbon trim & White fake fur trim

1 Dark Turquoise crushed velvet light blue ribbon trim and White fake fur trim

1 med purple crushed velvet cranberry ribbon trim and white fake fur trim

1 2 color.. top layer Dark Turquoise crushed velvet blue ribbon trim bottom layer Dark Gray crushed velvet white fake fur trim

1 Raspberry (light) crush velvet dark pink ribbon trim and white fake fur trim

1 Dark Blue crushed velvet blue satin ribbon trim and white fake fur trim

1 2 color top layer Red crushed velvet gold ribbon trim and bottom- Olive Green crushed velvet and white fake fur trim

2 Cranberry soft velveteen peach ribbon trim white fake fur trim

1 Mustard gold crush velvet cranberry ribbon trim white fake fur

1 Dark Purple soft velveteen cream color ribbon white fake fur

1 Mouse Gray soft velveteen pink ribbon trim white fake fur trim

##### 6 MEN'S LONG DOUBLE CAPES

1 Long Olive Green Gabardine Men's Cape

1 Long Gray Gabardine Men's Cape

1 Long Navy Blue Heavy Crepe Men's Cape

2 Long Navy Blue Velour Men's Cape

1 Short Red Gabardine Men's Cape

## NUTCRACKER BOX A



**Shown 8 of 12 Party Girls /Friends  
Capes**



**2 YOUNG LADIES LONG CAPES  
1 Dark Rose Crushed Velvet Cap with Hood  
1 Dark Blue Crushed Velvet Cape with Hood**



## NUTCRACKER BOX A

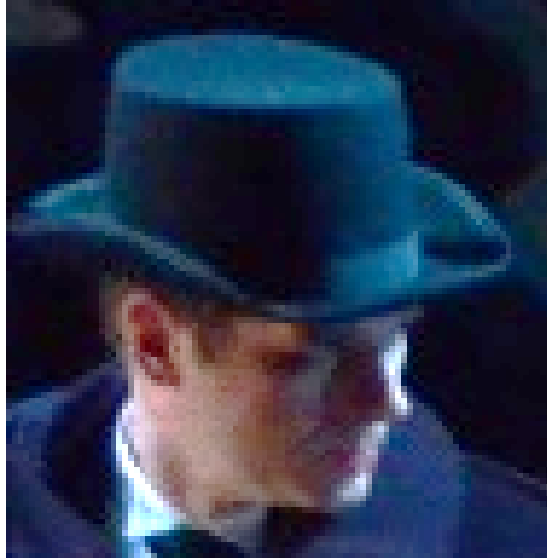


4 Samples of Men's Long Double Capes

## NUTCRACKER BOX B

**BOX B    11 ITEMS**

**11 BLACK MEN'S TOP HATS w/ Black grosgrain ribbon**



**PLASTIC BOX # C**

**36 ITEMS**

**SHEEP Act II**

10 White soft curly Poodle like material  
3 Black soft curly Poodle like material  
13 Hood head pieces in same material  
Black socks for the hands

THERE ARE ONLY 8 White sheep and 2 Black Sheep IN THIS PHOTO

We have 10 White Sheep and 3 Black Sheep costumes.



**Zoom in to see material closer**



10 White soft curly Poodle like material.....3 Black Soft Poodle like material..... 13 hood head pieces in same material and 10 pair of Black Socks for the hands



**NUTCRACKER BOX D**

**BOX D**

**12 ITEMS**

**12 MUSHROOM HATS**



**12 Mushroom Hats**

**(used with Little Children in Chinese section in Act. II  
in back of the Soloists)**

**Can be an Alternate with the Little Chinese Costumes in Box 11**

NUTCRACKER BOX E

BOX E

12 ITEMS

12 BAKER PROPS GOODIES, cakes, pies, cookies, brownies



## NUTCRACKER BOX E





## NUTCRACKER BOX F

**BOX F** **19 ITEMS**

17 GOLD MESH TREE TOP STARS W/ HANDLES

2 Extra Gold Mesh Tree Top Stars w/out Handles



## NUTCRACKER BOX H

### BOX H

### ORIGINAL NUTCRACKER HEAD



**PLASTIC BOX # J**

**NUTCRACKER BOX J**

**5 ITEMS**

**SMALLER NUTCRACKER HEAD,**

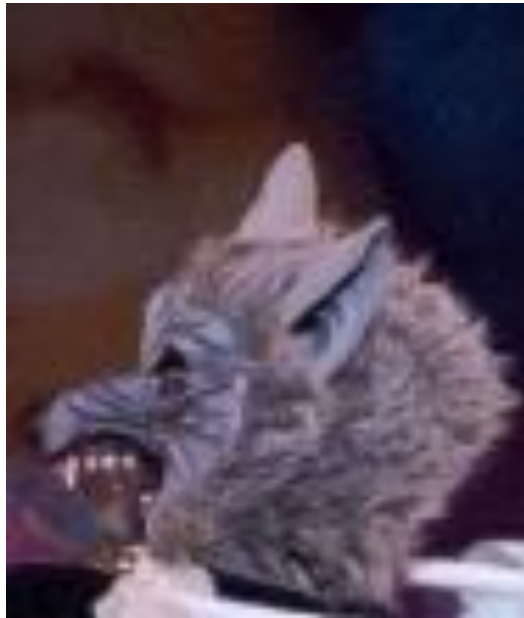
**MOUSE PRINCE MASK**

**WOLF MASK AND GLOVES**

**MOUSE KING HEAD MASK**



**Smaller Nutcracker  
Head Mask  
BATTLE SCENE**



**WOLF HEAD MASK**



**MOUSE PRINCE HEAD MASK & CROWN**



**WOLF GLOVES**



**MOUSE KING HEAD MASK HAT CROWN**

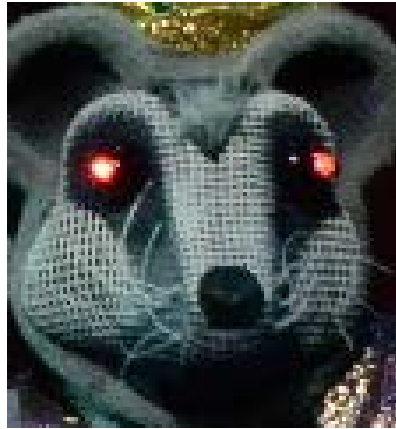


**NUTCRACKER BOX K**

**PLASTIC BOX # K**

**12 ITEMS**

**12 BIG MICE MESH MASK HEADS**



## **NUTCRACKER BOX L**

### **BOX L**

#### **5 SNOW BAGS**

**FABRIC STRONG CANVAS WITH SLITS FOR THE SNOW**

**4 BAGS @ BAG 2 FEET LONG X 3 FEET WIDE**

**1 BAG @ 20 FEET LONG X 3 FEET WIDE**

**USED FRONT AND BACK OF STAGE**

## NUTCRACKER BOX M

### BOX M

### LIGHTING GELS





## NUTCRACKER BOX N

### BOX N

**RED VELOR WINDOW CURTAINS for ACT I PARLOR SCENE** decorated red thick fringe and trim in gold and black ...with tie backs (from the top of the backdrop to floor, to be hung on the sides of the backdrop windows)



Look closely and see the drapes in the background in front of hanging backdrop on the sides of the window

## **NUTCRACKER STORAGE (PROPS)**

**FIREPLACE AND LOGS**

**CANNON**

**BIG BEN CLOCK**

**THRONE, PLATFORM AND STAIRS**

**NUTCRACKER WALNUT SLEIGH**

**4 MUSHROOM STANDS**

**2 LOLLIPOP STANDS**

**PUPPET THEATRE**

**3 PUPPETS ON A STICK, (Nutcracker Soldier, Rat King and Clara)**

**SHEPHERDESS STAFF**



**NUTCRACKER WALNUT BOAT  
SLEIGH**



**FIREPLACE IN PARLOR.... When  
the log is removed ..the mouse  
prince can enter the stage  
from inside the fireplace.**





**CANNON IN BATTLE SCENE**



2 of these placed on each side of the throne.



4 of These Mushroom stands are place 2 on each side of throne.



To be placed on top of a mushroom stand





**The Clock is FLAT and is RIGGED TO FLY if needed.**



**Shepherdess Staff**



**Bow on Staff**



**The FAKE FOOD ON THE TABLE , Turkey, Fruit, Bread, Cake and the 2 Red Table Cloths to be placed in the Parlor.. Act I**



**THRONE, ON PLATFORM AND STAIRS ON SIDES  
(Backdrop behind the Throne is not included )**



**Puppet Theatre**



**Jester coming out of the puppet Theatre as the same for the Ballerina and Soldier Dolls**



**Clara, Mouse King, Prince Puppets**